



FANCY SHAPE
BRIDAL

Nobody Does "I DO" like we do!®



2A
208D6SM
.25 DM 14K
Center stone size - 3/4 to 1 ct.
\$1,350



2B
219G3SM
.60 DM 14K
Center stone size - 5/8 to 7/8 ct.
\$2,695

OVAL COLLECTION



2C
245C3SM
.50 DM 14K
Center stone size - 7/8 to 1 1/4 ct.
\$2,595



2D
249C3SM
.55 DM 14K
Center stone size - 1/2 to 3/4 ct.
\$2,595



2E
216D5SM
.35 DM 14K
Center stone size - 3/4 to 1 ct.
\$1,595

Center stone sold separately
Matching band available



3A
247C2SM
.65 DM 14K
Center stone size - 7/8 to 1 1/4 ct.
\$3,150



3B
220G2SM
.90 DM 14K
Center stone size - 1 to 1 1/4 ct.
\$4,095



3C
208H2SM
.85 DM 14K
Center stone size - 7/8 to 1 1/4 ct.
\$3,895



3D
252F3SM
.50 DM 14K
Center stone size - 1/2 to 3/4 ct.
\$2,795



3E
202F3SM
.65 DM 14K
Center stone size - 5/8 to 7/8 ct.
\$2,995

Center stone sold separately
Matching band available



4A
211F3SM
.50 DM 14K
Center stone size - 5/8 to 7/8 ct.
\$3,295



4B
244A1SM
1.00 DM 14K
Center stone size - 1 to 1 1/4 ct.
\$6,795



4C
267K2SM
.85 DM 14K
Center stone size - 5/8 to 7/8 ct.
\$3,795



4D
231D2SM
.90 DM 14K
Center stone size - 5/8 to 7/8 ct.
\$3,995



4E
243A1SM
.95 DM 14K
Center stone size - 1 to 1 1/4 ct.
\$4,795

Center stone sold separately
Matching band available



5A
209H2SM
.75 DM 14K
Center stone size - 7/8 to 1 1/4 ct.
\$3,350



5B
217A2SM
.85 DM 14K
Center stone size - 1 to 1 1/4 ct.
\$4,595



5C
207F3SM
.55 DM 14K
Center stone size - 5/8 to 7/8 ct.
\$2,350

**OVAL
COLLECTION**



5D
240A3SM
.50 DM 14K
Center stone size - 1 to 1 1/4 ct.
\$2,495



5E
246F4SM
.40 DM 14K
Center stone size - 5/8 to 7/8 ct.
\$2,150

Center stone sold separately
Matching band available



6A
250C3SM
.60 DM 14K
Center stone size - 1/2 to 3/4 ct.
\$2,995



6B
251C4SM
.40 DM 14K
Center stone size - 5/8 to 7/8 ct.
\$2,395

**OVAL
COLLECTION**



6C
242A3SM
.55 DM 14K
Center stone size - 1 to 1 1/4 ct.
\$3,050



6D
241A3SM
.50 DM 14K
Center stone size - 1 to 1 1/4 ct.
\$2,895



6E
268A3SM-OV
.45 DM 14K
Center stone size - 7/8 to 1 1/4 ct.
\$2,795

Center stone sold separately
Matching band available



7A
253F5SM
.30 DM 14K
Center stone size - 5/8 to 7/8 ct.
\$2,050



7B
255F6SM
.25 DM 14K
Center stone size - 3/4 to 1 ct.
\$1,950



7C
249G8SM
.15 DM 14K
Center stone size - 5/8 to 7/8 ct.
\$1,595



7D
208F6SM
.25 DM 14K
Center stone size - 5/8 to 7/8 ct.
\$1,550



7E
222F3SM
.45 DM 14K
Center stone size - 5/8 to 7/8 ct.
\$2,895

Center stone sold separately
Matching band available



8A
204G3SM
.45 DM 14K
Center stone size - 5/8 to 7/8 ct.
\$2,395



8B
226A3SM
.50 DM 14K
Center stone size - 7/8 to 1 1/4 ct.
\$2,395



8C
228F3SM
.50 DM 14K
Center stone size - 7/8 to 1 1/4 ct.
\$2,950



8D
239C2SM
.75 DM 14K
Center stone size - 3/4 to 1 ct.
\$3,150



8E
215D4SM
.40 DM 14K
Center stone size - 7/8 to 1 1/4 ct.
\$1,795

Center stone sold separately
Matching band available



9A
217F3SM
.60 DM 14K
Center stone size - 7/8 to 1 1/4 ct.
\$3,250



9B
225F7SM
.20 DM 14K
Center stone size - 5/8 to 7/8 ct.
\$1,595



9C
227F6SM
.25 DM 14K
Center stone size - 7/8 to 1 1/4 ct.
\$1,895

EMERALD COLLECTION



9D
229F3SM
.45 DM 14K
Center stone size - 7/8 to 1 1/4 ct.
\$2,350



9E
235D5SM
.35 DM 14K
Center stone size - 7/8 to 1 1/4 ct.
\$2,195

Center stone sold separately
Matching band available



10A
209F3SM
.50 DM 14K
Center stone size - 7/8 to 1 1/4 ct.
\$3,295



10B
233D3SM
.55 DM 14K
Center stone size - 7/8 to 1 1/4 ct.
\$2,695

EMERALD COLLECTION



10C
209G3SM
.65 DM 14K
Center stone size - 7/8 to 1 1/4 ct.
\$3,395



10D
243C3SM
.60 DM 14K
Center stone size - 5/8 to 7/8 ct.
\$2,850



10E
212D6SM
.25 DM 14K
Center stone size - 7/8 to 1 1/4 ct.
\$1,395

Center stone sold separately
Matching band available



11A
228A1SM
1.05 DM 14K
Center stone size - 7/8 to 1 1/4 ct.
\$4,850



11B
203G3SM
.45 DM 14K
Center stone size - 7/8 to 1 1/4 ct.
\$2,750



11C
230A2SM
.75 DM 14K
Center stone size - 7/8 to 1 1/4 ct.
\$3,950



11D
218E1SM
1.00 DM 14K
Center stone size - 7/8 to 1 1/4 ct.
\$5,095



11E
227A2SM
.90 DM 14K
Center stone size - 7/8 to 1 1/4 ct.
\$4,095

Center stone sold separately
Matching band available



12A
209D6SM
.25 DM 14K
Center stone size - 5/8 to 7/8 ct.
\$1,350



12B
214D4SM
.40 DM 14K
Center stone size - 5/8 to 7/8 ct.
\$1,595



12C
257C2SM
.60 DM 14K
Center stone size - 7/8 to 1 1/4 ct.
\$2,895



12D
203H3SM
.45 DM 14K
Center stone size - 1/2 to 3/4 ct.
\$2,195



12E
22163SM
.60 DM 14K
Center stone size - 7/8 to 1 1/4 ct.
\$2,995

Center stone sold separately
Matching band available



13A
218A2SM
.75 DM 14K
Center stone size - 5/8 to 7/8 ct.
\$3,895



13B
258F2SM
.70 DM 14K
Center stone size - 7/8 to 1 1/4 ct.
\$3,050



13C
210F3SM
.50 DM 14K
Center stone size - 5/8 to 7/8 ct.
\$3,350

**PEAR SHAPE
COLLECTION**



13D
206F3SM
.55 DM 14K
Center stone size - 5/8 to 7/8 ct.
\$2,450



13E
254C2SM
.70 DM 14K
Center stone size - 7/8 to 1 1/4 ct.
\$3,295

Center stone sold separately
Matching band available



14A
224G3SM
.45 DM 14K
Center stone size - 5/8 to 7/8 ct.
\$2,595



14B
226E2SM
.85 DM 14K
Center stone size - 5/8 to 7/8 ct.
\$4,195

PEAR SHAPE COLLECTION



14C
210H8SM
.15 DM 14K
Center stone size - 1/2 to 3/4 ct.
\$1,595



14D
256E5SM
.30 DM 14K
Center stone size - 5/8 to 7/8 ct.
\$1,750



14E
262F2SM
.70 DM 14K
Center stone size - 7/8 to 1 1/4 ct.
\$2,995

Center stone sold separately
Matching band available



15A
231E4SM
.40 DM 14K
Center stone size - 1 to 1 1/4 ct.
\$2,195



15B
253C3SM
.45 DM 14K
Center stone size - 5/8 to 7/8 ct.
\$1,995



15C
263F3SM
.45 DM 14K
Center stone size - 5/8 to 7/8 ct.
\$2,595



15D
265K2SM
.85 DM 14K
Center stone size - 5/8 to 7/8 ct.
\$3,995



15E
259F2SM
.70 DM 14K
Center stone size - 7/8 to 1 1/4 ct.
\$3,295

Center stone sold separately
Matching band available



16A
233C3SM
.50 DM 14K
Center stone size - 5/8 to 7/8 ct.
\$2,695



16B
214F3SM
.60 DM 14K
Center stone size - 3/4 to 1 ct.
\$2,750



16C
235C4SM
.40 DM 14K
Center stone size - 1/2 to 3/4 ct.
\$2,050



16D
213D5SM
.30 DM 14K
Center stone size - 7/8 to 1 1/4 ct.
\$1,450



16E
225A3SM
.50 DM 14K
Center stone size - 1 1/4 to 1 3/4 ct.
\$2,395

Center stone sold separately
Matching band available



17A
221A3SM
.65 DM 14K
Center stone size - 5/8 to 7/8 ct.
\$3,095



17B
222A3SM
.50 DM 14K
Center stone size - 3/4 to 1 ct.
\$2,895



17C
248F2SM
.70 DM 14K
Center stone size - 5/8 to 7/8 ct.
\$3,495

MARQUISE COLLECTION



17D
249F3SM
.55 DM 14K
Center stone size - 5/8 to 7/8 ct.
\$2,795



17E
220A3SM
.65 DM 14K
Center stone size - 7/8 to 1 1/4 ct.
\$2,695

Center stone sold separately
Matching band available



18A
250F2SM
70 DM 14K
Center stone size - 1/2 to 3/4 ct.
\$2,895



18B
238C3SM
50 DM 14K
Center stone size - 5/8 to 7/8 ct.
\$2,395

MARQUISE
COLLECTION



18C
212G3SM
55 DM 14K
Center stone size - 3/4 to 1 ct.
\$3,250



18D
219A3SM
55 DM 14K
Center stone size - 1/2 to 3/4 ct.
\$2,950



18E
216A3SM
45 DM 14K
Center stone size - 7/8 to 1 1/4 ct.
\$2,995

Center stone sold separately
Matching band available



19A
236C3SM
.50 DM 14K
Center stone size - 5/8 to 7/8 ct.
\$2,395



19B
223A3SM
.50 DM 14K
Center stone size - 3/4 to 1 ct.
\$3,095



19C
224A3SM
.65 DM 14K
Center stone size - 3/4 to 1 ct.
\$3,395



19D
232C4SM
.40 DM 14K
Center stone size - 1/2 to 3/4 ct.
\$2,095



19E
251F3SM
.45 DM 14K
Center stone size - 3/4 to 1 ct.
\$2,495

Center stone sold separately
Matching band available



20A
219D4SM
.40 DM 14K
Center stone size - 7/8 to 1 1/4 ct.
\$1,695



20B
15463SM
.60 DM 14K
Center stone size - 7/8 to 1 1/4 ct.
\$3,095



20C
243B3SM
.65 DM 14K
Center stone size - 7/8 to 1 1/4 ct.
\$3,150



20D
22182SM
.90 DM 14K
Center stone size - 7/8 to 1 1/4 ct.
\$4,795



20E
24843SM
.50 DM 14K
Center stone size - 7/8 to 1 1/4 ct.
\$2,895

Center stone sold separately
Matching band available



21A
200D0SM
1.40 DM 14K
Center stone size - 1 1/4 to 1 3/4 ct.
\$7,150



21B
264A2SM
.80 DM 14K
Center stone size - 7/8 to 1 1/4 ct.
\$4,050



21C
22820SM
1.30 DM 14K
Center stone size - 1 5/8 to 2 1/3 ct.
\$7,095

CUSHION COLLECTION



21D
18370SM
1.20 DM 14K
Center stone size - 1 to 1 1/2 ct.
\$6,095



21E
15420SM
1.15 DM 14K
Center stone size - 7/8 to 1 1/4 ct.
\$4,695

Center stone sold separately
Matching band available



22A
23724SM
.40 DM 14K
Center stone size - 1 1/4 to 1 3/4 ct.
\$2,350



22B
245B4SM
.40 DM 14K
Center stone size - 3/8 to 5/8 ct.
\$2,650

CUSHION COLLECTION



22C
22842SM
.75 DM 14K
Center stone size - 1 5/8 to 2 1/3 ct.
\$3,395



22D
214G3SM
.60 DM 14K
Center stone size - 7/8 to 1 1/4 ct.
\$3,195



22E
213G3SM
.45 DM 14K
Center stone size - 7/8 to 1 1/4 ct.
\$2,750

Center stone sold separately
Matching band available



23A
220F4SM
.40 DM 14K
Center stone size - 7/8 to 1 1/4 ct.
\$2,950



23B
14132SM
.85 DM 14K
Center stone size - 7/8 to 1 1/4 ct.
\$3,695



23C
22872SM
.85 DM 14K
Center stone size - 1 1/4 to 1 3/4 ct.
\$4,295



23D
205H3SM
.60 DM 14K
Center stone size - 7/8 to 1 1/4 ct.
\$3,350



23E
248G7SM
.20 DM 14K
Center stone size - 5/8 to 7/8 ct.
\$1,595

Center stone sold separately
Matching band available

ASHI

CELEBRATING 35 YEARS

18 East 48th Street, 14th Floor | New York, NY 10017
☎ 212.319.8291 | 800.622.2744 | 📠 212.319.4341
www.ashidiamonds.com | orders@ashidiamonds.com



Oval

A longer version of the round brilliant cut, makes fingers look slender and longer. It looks bigger per carat weight than other shapes.



Emerald

This is a rectangular shaped diamond that is traditionally popular with royalty. It has step cuts on the side and a large, open table.



Pear

A mix of round brilliant and marquise shaped diamond, bringing the definitive point along with the soft round edges.



Marquise

It is a round shape that has been stretched with pointed ends. It has a similar appeal to the oval shape. Turned on its side, it looks like a woman's parted lips.



Cushion

It resembles a princess cut diamond where the sides and corners have been rounded out - a hybrid of the Old Miner cut and the more modern cut - brilliant cut.



Heart

A much loved shape because of its romantic appeal. The symbolic shape of the heart diamond instantly evokes the innocence and purity of love.



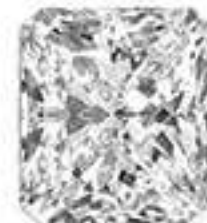
Round

The classic and most popular of diamond shape. Almost 75% of the diamonds sold are round shape.



Princess

This is the second most popular diamond shape! the most popular princess cut diamonds are perfect square shape.



Radiant

It is a square or a rectangular diamond shape with angled, cut off edges, a combination of brilliant and step cut.

Jewelry images shown may have been enlarged or retouched to show details. Prices shown may change without notice due to market conditions and fluctuations. Diamond carat total weight (ctw) represents the approximate carat total weight of all the diamonds set, unless noted. Diamond total weights may vary between 0.01 and 0.07 ct. All pendants priced with chains. Natural colored diamonds may have been treated or enhanced by heating or irradiation. Natural colored gemstones may have been treated or enhanced by heating, irradiation, oiling, filling, or diffusion. Photographic, typographical, and print errors are subject to correction. Some styles featured in the catalog may not be immediately available, but may be ordered.